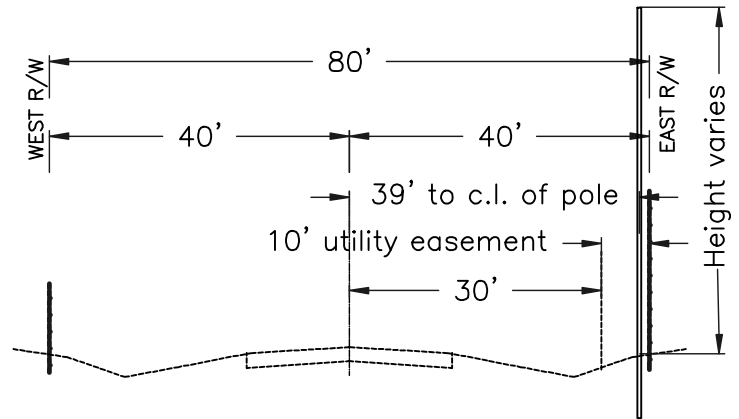
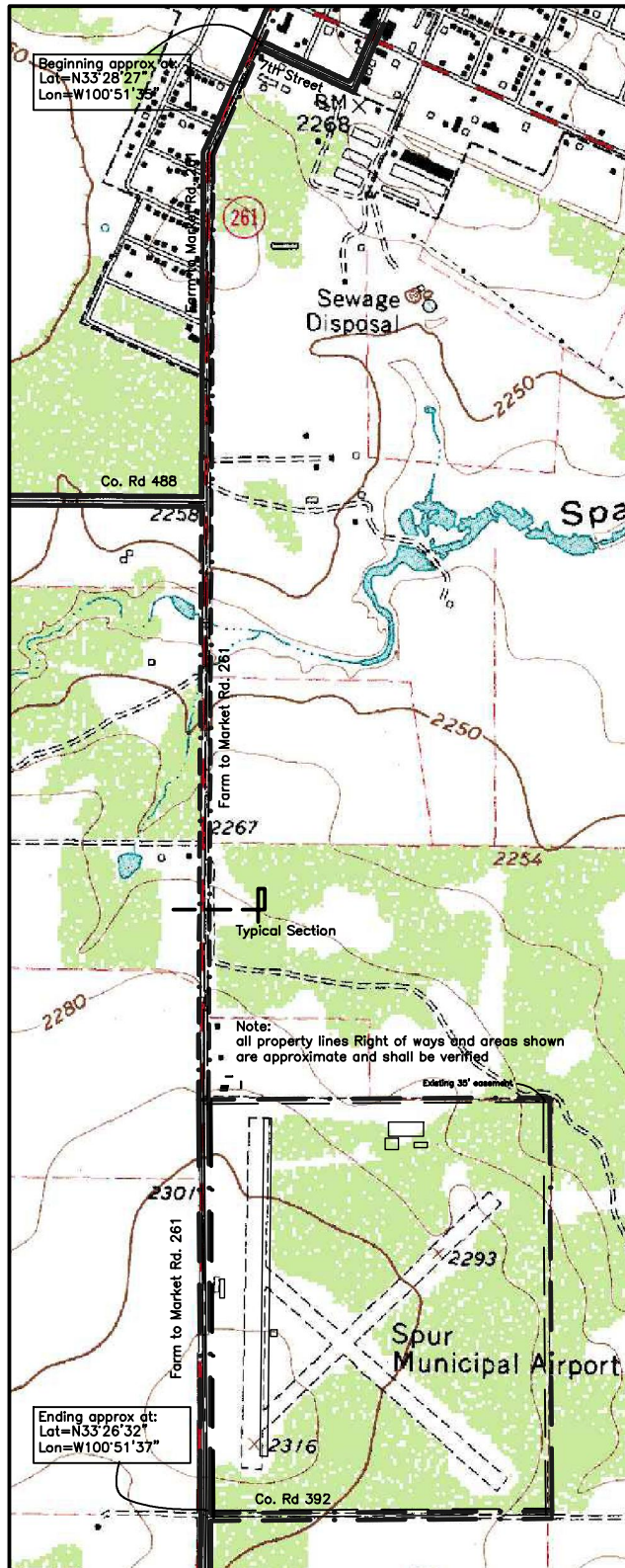


10' WIDE UTILITY EASEMENT For City of Spur, Texas



Note:
ALL POWER POLES SHALL BE SPACED 150' OC MINIMUM
TO 175' OC MAXIMUM.

**FARM TO MARKET ROAD 261
TYPICAL ROAD CROSS SECTION**



Utility Easement Plat
SCALE 1"=1500'

PREPARED BY:
LAMDA Engineering and Development
E-mail: lamdadev@yahoo.com

LAMDADEV.COM

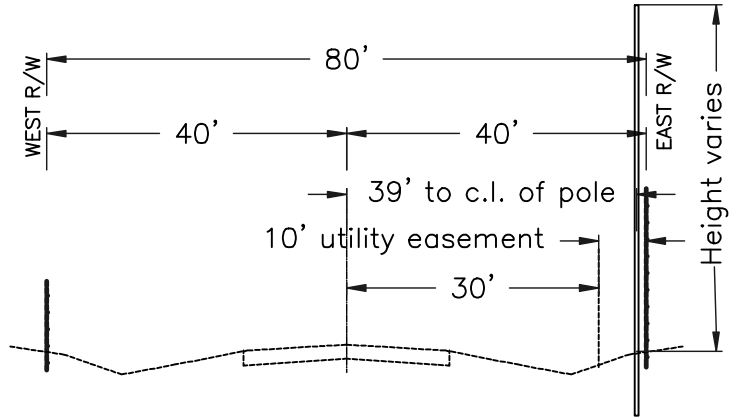
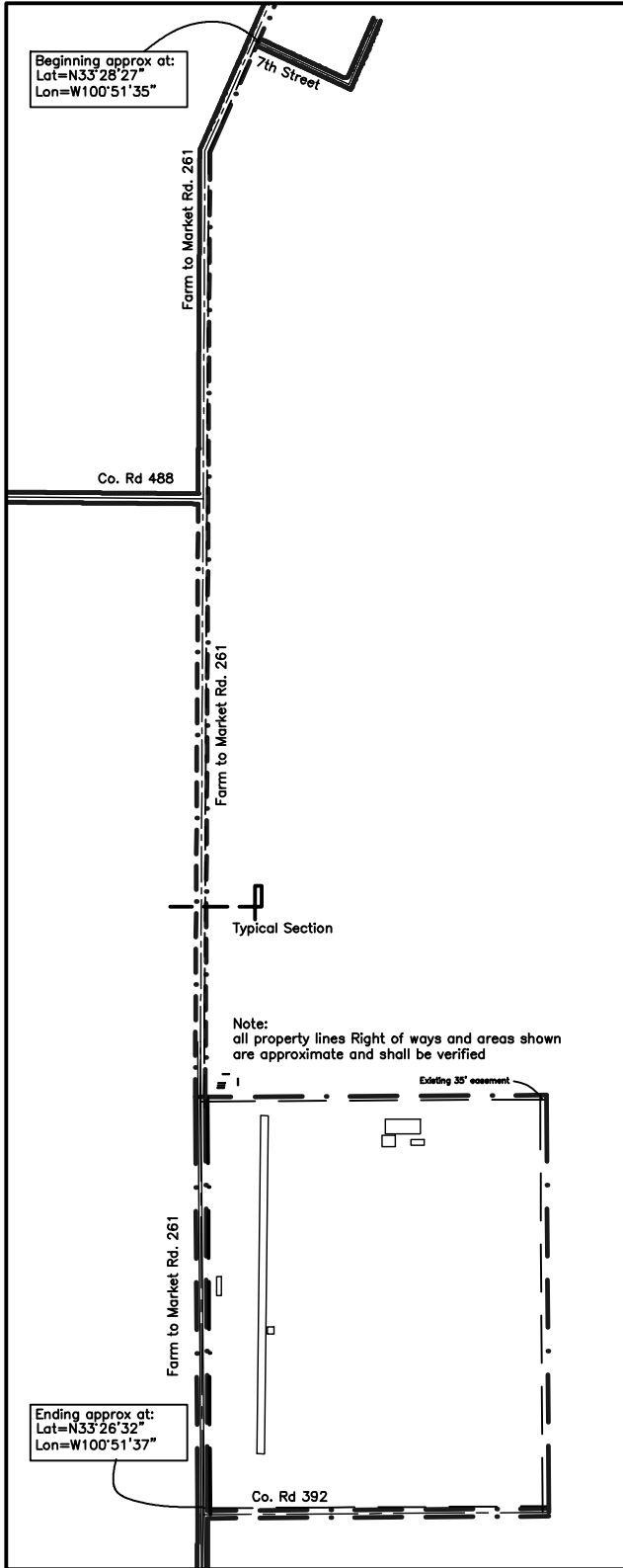
MAXXSOLAR-TEXAS

P.O.Box 268
Spur, Texas 79370

Contact: Gerald Rauch
E-mail: gerald@maxxwind.com

(951) 757-6149

10' WIDE UTILITY EASEMENT For City of Spur, Texas



Note:
ALL POWER POLES SHALL BE SPACED 150' OC MINIMUM
TO 175' OC MAXIMUM.

**FARM TO MARKET ROAD 261
TYPICAL ROAD CROSS SECTION**



Utility Easement Plat
SCALE 1"=1500'

PREPARED BY:
LAMDA Engineering and Development
E-mail: lamdadev@yahoo.com

LAMDADEV.COM

MAXXSOLAR-TEXAS

P.O.Box 268
Spur, Texas 79370

Contact: Gerald Rauch
E-mail: gerald@maxxwind.com

(951) 757-6149